

APPROVED TA KWU LING NORTH OUTLINE ZONING PLAN NO. S/NE-TKLN/2

December
2025

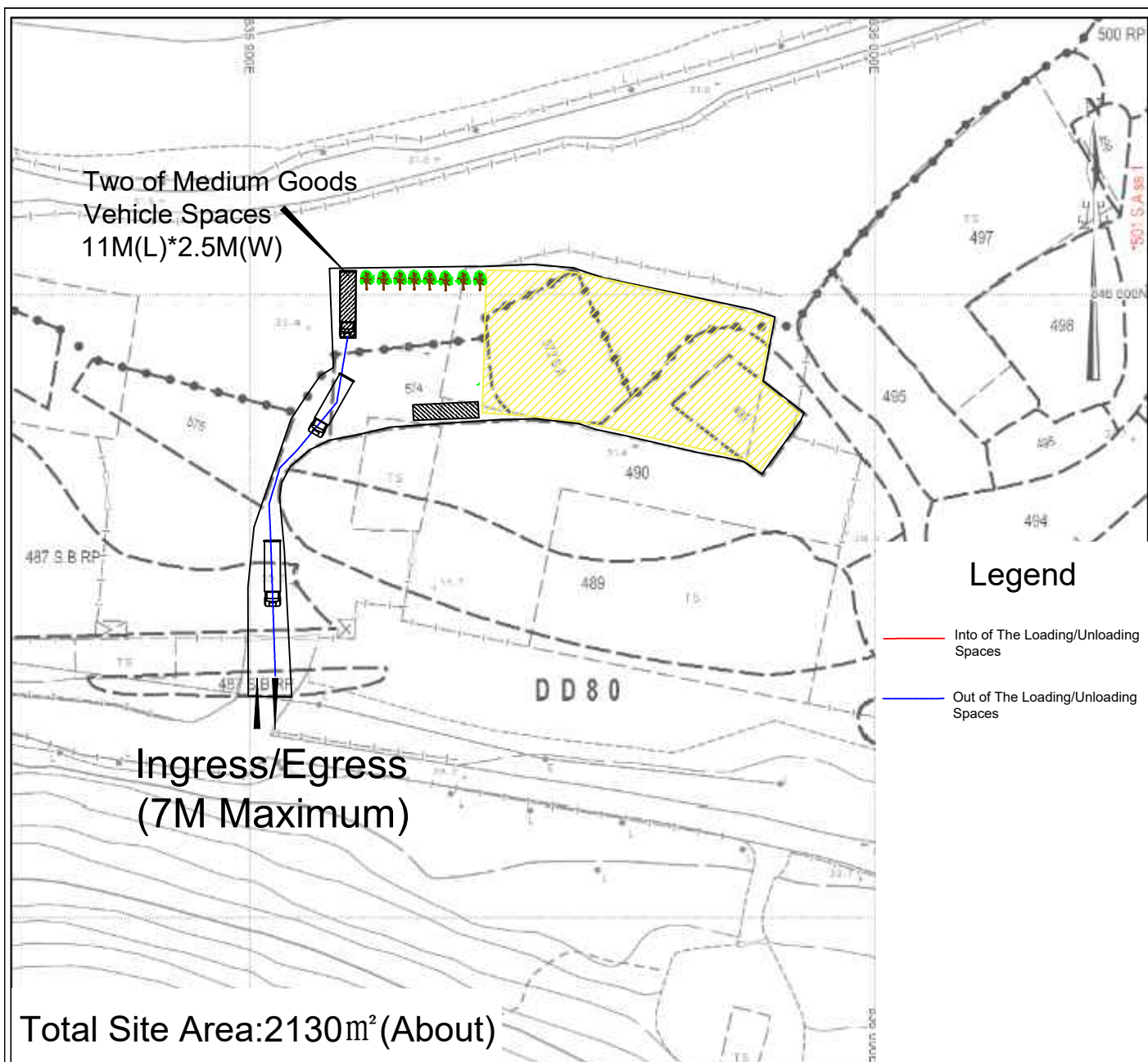
Swept Path Plan

Proposed Temporary Warehouse for Storing Car Parts for a Period of 3 Years at Lots 487 S.B RP(Part), 490(Part), 491, 572S.A and 574 in D.D. 80 and adjoining Government Land, Lin Ma Hang, Ta Kwu Ling, NT

YING SHING
(HOPEWELL)
ENGINEERING
CO.LTD.

1:1000

Annex 4



APPROVED TA KWU LING NORTH OUTLINE ZONING PLAN NO. S/NE-TKLN/2

December
2025

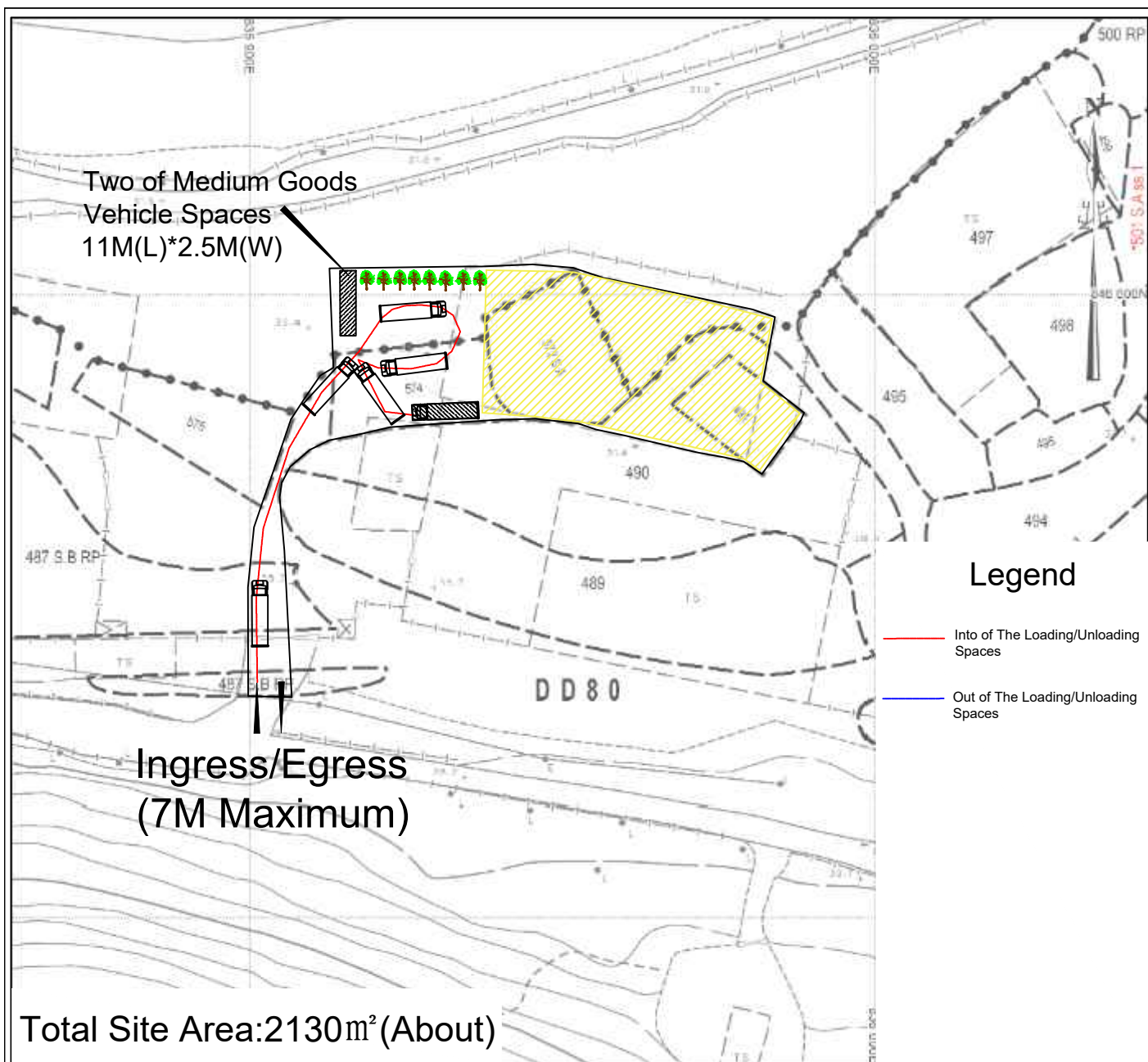
Swept Path Plan

Proposed Temporary Warehouse for Storing Car Parts for a Period of 3 Years at Lots 487 S.B RP(Part), 490(Part), 491, 572S.A and 574 in D.D. 80 and adjoining Government Land, Lin Ma Hang, Ta Kwu Ling, NT

YING SHING
(HOPEWELL)
ENGINEERING
CO.LTD.

1:1000

Annex 5



APPROVED TA KWU LING NORTH OUTLINE ZONING PLAN NO. S/NE-TKLN/2

December
2025

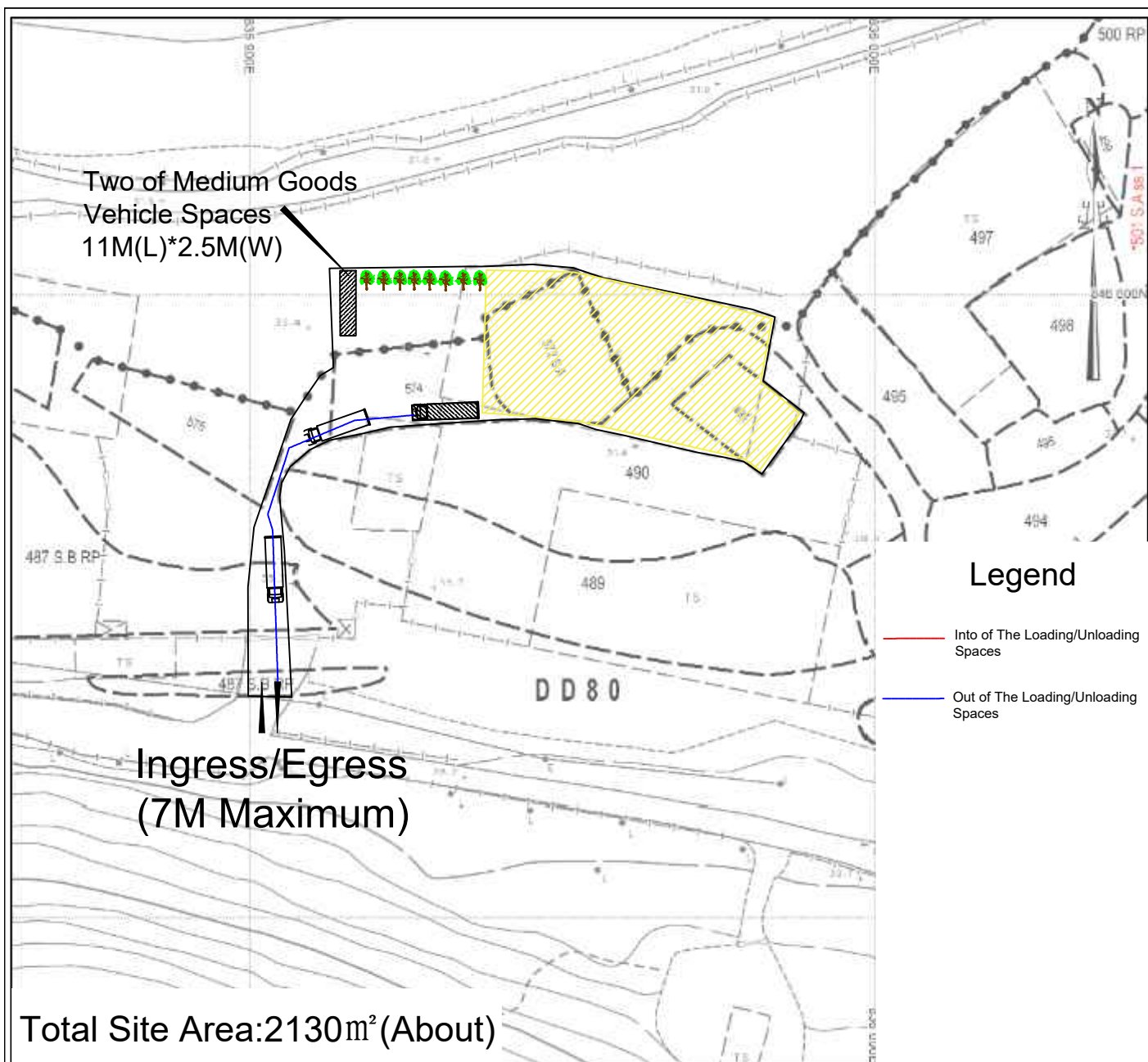
Swept Path Plan

Proposed Temporary Warehouse for Storing Car Parts for a Period of 3 Years at Lots 487 S.B RP(Part), 490(Part), 491, 572S.A and 574 in D.D. 80 and adjoining Government Land, Lin Ma Hang, Ta Kwu Ling, NT

YING SHING
(HOPEWELL)
ENGINEERING
CO.LTD.

1:1000

Annex 6



APPROVED TA KWU LING NORTH OUTLINE ZONING PLAN NO. S/NE-TKLN/2

December
2025

Swept Path Plan

Proposed Temporary Warehouse for Storing Car Parts for a Period of 3 Years at Lots 487 S.B RP(Part), 490(Part), 491, 572S.A and 574 in D.D. 80 and adjoining Government Land, Lin Ma Hang, Ta Kwu Ling, NT

YING SHING
(HOPEWELL)
ENGINEERING
CO.LTD.

1:1000

Annex 7